

## PulmoTrace™ - Diagnosing and Monitoring CHF Patients

"Even in severe CHF there are no agreed standard diagnostic criteria and no reliable methods for quantifying the associated pulmonary edema."

*Eur. J. Heart Failure*

CardioInspect introduces the *PulmoTrace™*, a monitoring and diagnostic device employing bio-impedance technology to accurately assess Pulmonary Edema and cardiac functionality indices in CHF (Congestive Heart Failure) patients.

Using its proprietary technology *PulmoTrace™* provides:

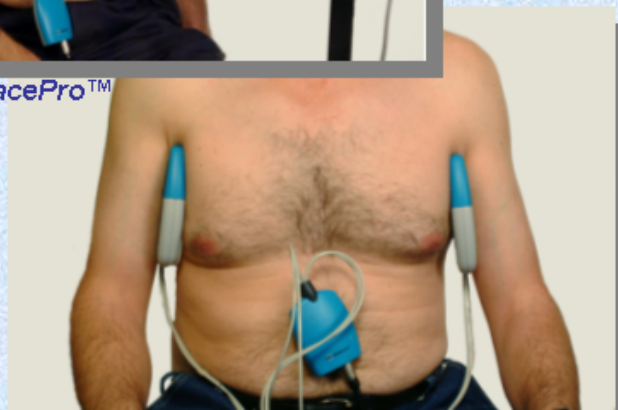
- Lung Fluid Content Index
- Stroke Volume
- Cardiac Output
- ECG

The *PulmoTrace™* indicators provide the physician with essential decision support information leading to more accurate treatment thus eliminating the physical signs of fluid retention.

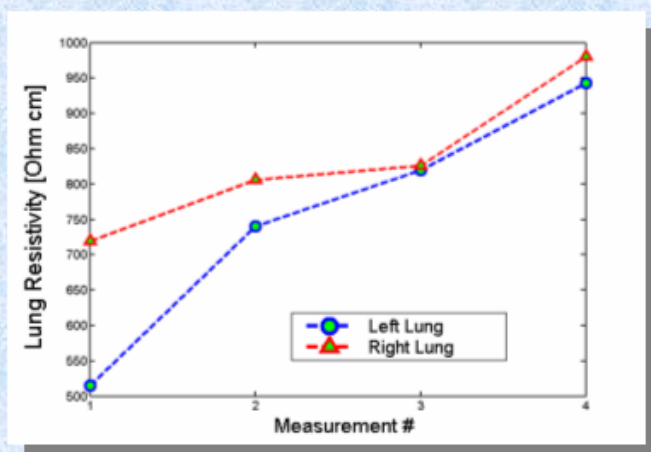
\* Not yet 510(K) approved



*PulmoTracePro™*



*PulmoTrace@Home™*



Monitoring CHF patient during diuretics treatment. Left and right lung resistivity estimations as a function of measurement number. A gradual increase of resistivity indicates the improvement of the edema degree.

**Prof. Shimon Abboud,**  
Chairman  
Tel: +972-3-6407397  
Mobile: +972-52-2743231  
Fax: +972-3-6405312  
E-mail: [abboud@eng.tau.ac.il](mailto:abboud@eng.tau.ac.il)

**Rami Goldreich,**  
Director of Business Development  
Tel: +972-3-9012666  
Mobile: +972-54-6628222  
Fax: +972-3-5423018  
E-mail: [rami@rrg.co.il](mailto:rami@rrg.co.il)